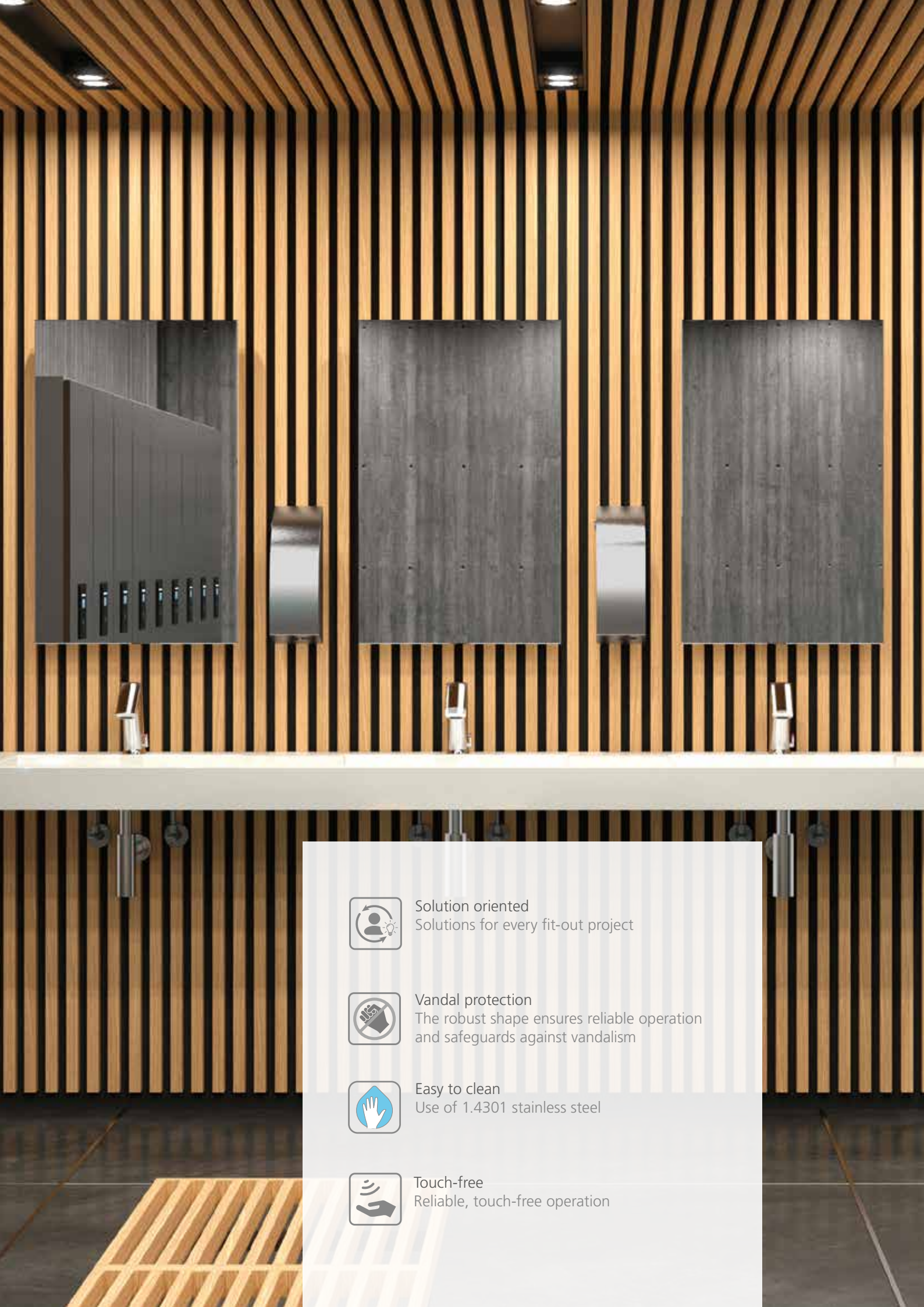


CONTI+ washroom equipment & accessories

Sustainable | Hygienic | Reliable | Smart





Solution oriented
Solutions for every fit-out project



Vandal protection
The robust shape ensures reliable operation and safeguards against vandalism



Easy to clean
Use of 1.4301 stainless steel



Touch-free
Reliable, touch-free operation



CONCEPTS & SOLUTIONS

For public, semi-public, commercial and medical facilities

The CONTI+ range for washrooms is comprehensive, so we can offer our customers the perfect solution and equipment for any project. Our development team in Germany and Switzerland works continuously on new product development to enable us to anticipate and handle our customers' highly diverse requirements – whatever the country, nationality and project.

Washrooms in public, semi-public, commercial and medical facilities are subject to extensive and complex demands.

In most cases, they need to meet industry-specific hygiene, safety and ergonomic standards. Playing a key role here are drinking water ordinances, workplace directives, accident prevention regulations and – most especially – new hygiene guidelines

Economic efficiency, sustainability, protection against vandalism and easy, rapid cleaning are further crucial factors when it comes to choosing the right accessories for any facility.

Expert support at all times

CONTI+ property service

Our in-house property consultants offer trade partners, engineers and architects rapid and expert support with project planning.

CONTI+ sales support

We are happy to arrange a meeting with you in person or online to discuss your project requirements.

CONTI+ online support

Looking for information fast? We have a wide range of online services. At www.conti.plus you will find technical information, tender documentation, images and much more.

CONTI+ VALUES

Impressive benefits

Water savings: Up to 70 % water saving through automatic start and stop function and flow rate limiting

Energy savings: Extend the battery life up to 8 years through solar and water energy. All faucets are optimised with smart algorithms to work efficiently with thermostatic control, energy-minimised electronics and hydraulics.

Materials: Stainless steel without coating, low nickel/lead content, plastics (recyclable), environmentally compatible disinfectants

Cost savings: Low maintenance, lower water and energy costs, short installation times, low overall lifecycle costs

Environmentally friendly: pH neutral, purely mineral, biodegradable disinfectants, reduced battery consumption

Environmental certificates: e.g. LEED, BREEAM

Safe water quality: Approved materials, sanitary rinse, thermal disinfection, stagnation prevention

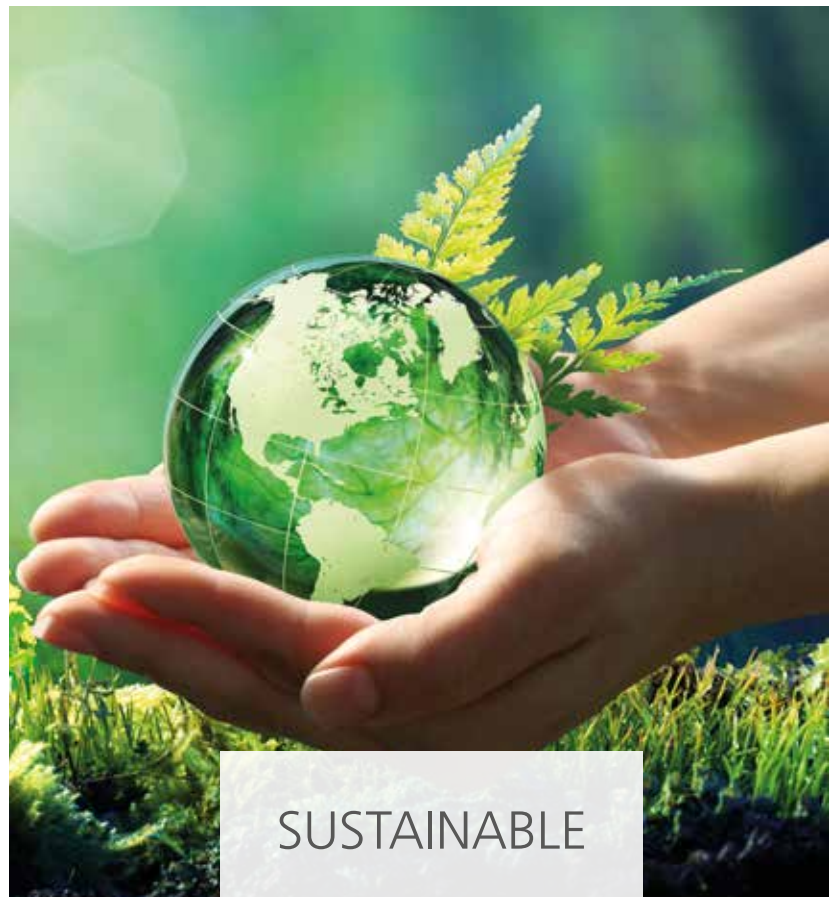
Vandal-proof: Robust materials, special design, integrated components

Functional and safe to use: Proven technology & components

Futureproof: In-house customer service, reliable availability of spare parts

Quality: 100 % tested with hygienic waterless (pneumatic) test including functional test, spare parts warranty

Certificates: E.g. DVGW, WRAS, WaterMark



CONTI+ VALUES

Impressive benefits



Touch-free operation: No contamination, no spread of germs, user friendly, can be reliably integrated into the CONTI+ CNX water management system

Monitored control: Possible with CONTI+ CNX water management system and the CONTI+ Service APP

Thermal disinfection: Can be centrally controlled and logged via the CONTI+ CNX water management system – safe, reliable and documented

Sanitary rinse: Can be centrally controlled and logged via the CONTI+ CNX water management system – adjustable rinse duration and interval

CONTI+ Service APP: Direct, wireless access to every faucet which has a ServiceBox; reliable control and monitoring of hygiene measures



Innovative technology: Sophisticated infrared technology for touch-free, reliable operation, unique in-house valve technology, state of the art networking, smart algorithms and intuitive user interface

CONTI+ CNX water management system: Intelligent water management for central control and monitoring of hygiene measures

Simple installation: Quick installation and commissioning, possibility of intuitive networking with the CONTI+ CNX water management system

Straightforward maintenance: Easy access for maintenance

Know-how: In-house development departments in Germany, Switzerland and Austria with specially trained engineers

Washroom equipment

Washroom accessories at a glance

WASHROOM ACCESSORIES											
Series						Features					
	SteelTec		BJÖRK		TAP	Stainless steel		Chrome		Plastic	
	electronic	manual	electronic	manual	electronic	electronic	manual	electronic	manual	electronic	manual
Soap dispenser	•	•	•	•	•					•	
Disinfectant dispenser	•	•	•	•	•						
Hand dryer	•	•	•		•		•				
Hair dryer							•				•
Paper towel dispenser		•		•			•				
Waste bin		•		•			•				
Sanitary bin		•		•			•		•		
Toilet paper holder		•		•			•		•		
Changing table		•		•							•
Paper roll holder		•		•			•		•		
Accessories		•		•			•		•		•
Wall mirror											•
Towel rail							•		•		
Shelves							•		•		

Accessories

Contents

SteelTec series

Soap dispensers	10
Disinfectant dispensers.....	11
Hand dryers	13
Toilet paper holders.....	14
Paper towel dispenser	14
Sanitary and waste bins	15
Changing table	15

BJÖRK series

Soap dispensers	16
Hand dryers	18
Disinfectant dispenser	21
Changing table	23
New products	24

TAP designer series

Soap dispensers	27
Disinfectant dispensers.....	27
Hand dryers	27

Stainless steel equipment

Dispenser systems	30
Hand dryers	34
Hair dryers	36
Combined wastepaper solutions.	38

Disinfectants

CONTI+ oXan™	40
--------------------	----

Stainless steel equipment

Accessories	43
WC equipment	45
WC accessories	47

WC equipment

Urinals	49
Urinal flush valves	51
Conversion kits.....	52

Washbasins

SteelTec	55
----------------	----





CONTI+ SteelTec

Design series made from high grade stainless steel

SteelTec is a complete product range for use in washrooms where both quality and aesthetics are the main priorities. All products are made from high quality materials and are noted for their unique design and use of brushed stainless steel. Experience shows that in highly frequented spaces, using high quality, robust and dirt-inhibiting materials helps to extend the service life of the accessories.

The 1.4301 stainless steel used here makes it difficult for viruses, bacteria and germs to survive. Unlike other materials, stainless steel remains permanently smooth. It is resistant to scratches, abrasion and chemicals. This means that it can be effectively cleaned using natural fibre textiles, microfibre cloths, synthetic fleece materials, natural leather, sponges and sponge cloths, brushes with natural or synthetic bristles and commercially available household and window cleaners, as well as natural cleaning products such as diluted vinegar (20/80).



Vandal-proof

Robust and hygienic housing made from stainless steel / chrome plated stainless steel



Easy to clean

1.4301 stainless steel housing



Touch-free

Reliable, touch-free operation

The simple, timeless design makes the products of this series immensely versatile and suitable for use in any environment – from modern arts centres and educational facilities through to historic museums steeped in tradition.



CONTI+ SteelTec
Design soap dispenser



CONTI+ SteelTec
AE DESIGN hand dryer

Soap dispensers

SteelTec: touch-free and hygienic

The comprehensive CONTI+ hygiene concept ensures safe, touch-free hand washing thanks to features such as smart and reliable infrared technology.

SteelTec DESIGN soap dispenser

CONT17200810282 Liquid soap

CONT17200810295 Foam soap

- For wall mounting
- Touch-free, battery operation
- Housing: 1.5 mm brushed stainless steel
- Refill container
- Mains connection possible by means of external transformer
- Automatic adjustment of activation distance
- With LED light for fill level indicator
- Vandal-proof lock
- Capacity: 950 ml/800 ml
- Additionally available in all RAL colours



SteelTec DESIGN soap dispenser

CONT17200710297 Liquid soap

CONT17200710298 Foam soap

- For wall mounting
- Manually operated
- Housing: 1.5 mm brushed stainless steel
- 1000– 1200 doses
- Vandal-proof lock
- Capacity: 1200 ml
- Additionally available in all RAL colours



Disinfectant dispensers

SteelTec: safe and hygienic

For optimum hygiene, CONTI+ offers not only electronically controlled faucets, but also touch-free soap and disinfectant dispensers and disinfectant solutions for surfaces and hand hygiene.

Elegant and reliable disinfectant dispensers for use in all types of public washrooms – safe and hygienic.



Touch-free
Reliable, touch-free operation



Hygienic
Reduction in bacterial growth through use of germ-inhibiting materials



Vandal protection
The robust shape and lock ensure reliable operation and safeguard against vandalism

SteelTec DESIGN MEDIC soap dispenser **CONT17200811282**

- For disinfectant
- For wall mounting
- Touch-free, battery operation
- Housing: 1.5 mm brushed stainless steel
- For disposable refill containers
- Mains connection possible by means of external transformer
- Automatic adjustment of activation distance
- With LED light
- Vandal-proof lock
- Capacity: 950 ml
- Additionally available in all RAL colours



The CONTI+ SteelTec AE DESIGN hand dryer comes in a choice of models to provide a modern and hygienic solution for every washroom setup.

- For wall mounting
- Touch-free
- Housing: 1.5 mm brushed stainless steel
- With IR sensor and electronic time switch
- Drying time: approx. 20 – 25 s
- With induction motor
- 90% recyclable
- Adjustable air speed



Matt stainless steel
CONT21200810280



Polished stainless steel
CONT21100810290



RAL colours
CONT21900810291

SteelTec hand dryers

Touch-free, hygienic and powerful

The CONTI+ SteelTec designer series combines robustness with a contemporary, purist design. The equipment series includes vandal-proof all-rounder hand dryers for public and semi-public washrooms of all types and for all frequencies of use.

If your preference is for an aesthetically pleasing washroom with individual touches, you will be sure to find inspiration in the CONTI+ SteelTec product range which is available in matt or polished stainless steel and in all RAL colours.



SteelTec MINI DESIGN hand dryer
CONT21200810281

- For wall mounting
- Touch-free
- Housing: 1.5 mm brushed stainless steel
- With IR sensor and time switch
- Drying time: approx. 30 s
- Virtually maintenance-free
- With induction motor
- Vandal-proof lock
- Adjustable air speed
- Additionally available in all RAL colours



SteelTec TURBO DESIGN hand dryer
CONT21200810288

- For wall mounting
- Touch-free
- Housing: 1.5 mm brushed stainless steel
- With IR sensor and time switch
- Drying time: approx. 10 – 15 s
- Powerful commutator motor
- Adjustable activation distance
- Vandal-proof lock
- Adjustable air speed
- Additionally available in all RAL colours

CONTI+ SteelTec

From toilet paper holders through to waste bins and changing tables



SteelTec DESIGN toilet paper holder **CONT13200710289**

- 1 standard and 1 maxi paper roll
- For wall mounting
- Housing: 1.5 mm brushed stainless steel
- Vandal-proof lock
- With practical spyhole
- Additionally available in all RAL colours



SteelTec DESIGN toilet paper holder **CONT13200710285**

- For 4 standard paper rolls
- For wall mounting
- Housing: 1.5 mm brushed stainless steel
- Vandal-proof lock
- Easy access when replacing paper rolls
- Additionally available in all RAL colours



SteelTec DESIGN toilet paper holder **CONT13200710287**

- For 1 maxi paper roll
- For wall mounting
- Housing: 1.5 mm brushed stainless steel
- Vandal-proof lock
- Easy access when replacing paper rolls
- Additionally available in all RAL colours



SteelTec DESIGN toilet paper holder **CONT13200710278**

- For 2 standard paper rolls
- For wall mounting
- Housing: 1.5 mm brushed stainless steel
- Easy access when replacing paper rolls
- Additionally available in all RAL colours



SteelTec DESIGN toilet paper holder **CONT13200710277**

- For 1 standard paper roll
- For wall mounting
- Housing: 1.5 mm brushed stainless steel
- Easy access when replacing paper rolls
- Additionally available in all RAL colours



SteelTec DESIGN paper towel dispenser **CONT16200710286**

- For 2-layer Z/C fold paper towels
- For wall mounting
- Housing: 1.5 mm brushed stainless steel
- Vandal-proof lock
- Capacity: 400 sheets
- Additionally available in all RAL colours



SteelTec DESIGN sanitary bin
CONT18270710283

- For wall mounting
- Housing: 1.5 mm brushed stainless steel
- With hygienic tip-up lid
- Fully welded, rustproof inner bin
- Vandal-proof lock
- Capacity: 7 l
- Additionally available in all RAL colours



SteelTec DESIGN waste bin
CONT18270710279 Hinged lid
CONT18270710294 Swing lid

- For wall mounting
- Housing: 1.5 mm brushed stainless steel
- With hinged lid/self-closing swing lid
- Fully welded, rustproof inner bin
- Vandal-proof lock
- Capacity: 11 l/12 l
- Additionally available in all RAL colours



SteelTec DESIGN waste bin
CONT18270710284

- For wall mounting
- Housing: 1.5 mm brushed stainless steel
- Self-closing swing lid
- Fully welded, rustproof inner bin
- With 2 shock absorbers for opening/closing
- Vandal-proof lock
- Capacity: 30 l
- Additionally available in all RAL colours



SteelTec safety changing table
CONT25578710659 with strap
CONT25578710660 without strap

- For wall mounting; can be folded up
- With white aluminium profile
- Made from easy-clean materials
- Supports up to 400 kg
- Additionally available in all RAL colours and with various motifs and patterns



SteelTec paper roll holder for safety changing table*
CONT13200710655

- For wall mounting
- With white aluminium profile
- Hygienic solution
- Extremely robust holder with lock
- Suitable for 700 x 100 mm paper rolls
- Can be combined with changing table
- Additionally available in all RAL colours



SteelTec paper roll holder for safety changing table*
CONT13200710656

- For wall mounting
- Made from stainless steel
- Suitable for several types of paper roll
- Lock at both ends
- Vandal-proof lock
- Spyholes for checking quantity of paper
- Can be combined with changing table

*Suitable paper rolls available

Designer soap dispensers

If your preference is for an aesthetically pleasing washroom with an individual touch, the new colour variations of the expanded CONTI+ BJÖRK range are bound to inspire.



Matt black*
CONT17600813056



White*
CONT17500813050



RAL colours*
CONT17900813052

*Note:
Matt black colour: gloss level 30
White colour: gloss level 75/80
RAL colours: gloss level to be indicated

CONTI+ BJÖRK series

Design series: contemporary and elegant

The CONTI+ BJÖRK range

The award-winning CONTI+ BJÖRK designer series is available in powder coated stainless steel and in several colour variations. Its purist design adds a stylish touch. The product series is particularly suited to washrooms in the restaurant, hotel and industrial sectors. Visual appeal, functionality and simple, hygienic operation are the bywords for these electronic hand dryers, soap and disinfectant dispensers, changing tables and toilet paper holders.



BJÖRK soap dispenser

BJÖRK products are timeless and flexible and offer maximum individual creative freedom. A design so compelling and original that the products have won awards.



Features

- Aesthetically appealing & functional
- IR sensor and touch-free
- Wall mounted and floor standing



Hygienic

Reduction in bacterial growth through use of germ-inhibiting materials



Vandal protection

The robust shape ensures reliable operation and safeguards against vandalism



Touch-free

Reliable, touch-free operation

Hand dryers

BJÖRK with interchangeable cover plates

Powerful touch-free high-speed dryer featuring a unique design that lends the hand dryer a slimline, almost floating look.



CONT21600813006

- For wall mounting
- Touch-free
- Stainless steel housing
- With IR sensor and time switch
- Drying time: approx. 10 – 15 s
- Powerful commutator motor
- LED light to indicate operation
- Adjustable activation distance
- Adjustable air speed
- In matt black, white or RAL colours
- Cover plate available in a choice of 6 standard colours

BJÖRK



red dot award 2015
winner

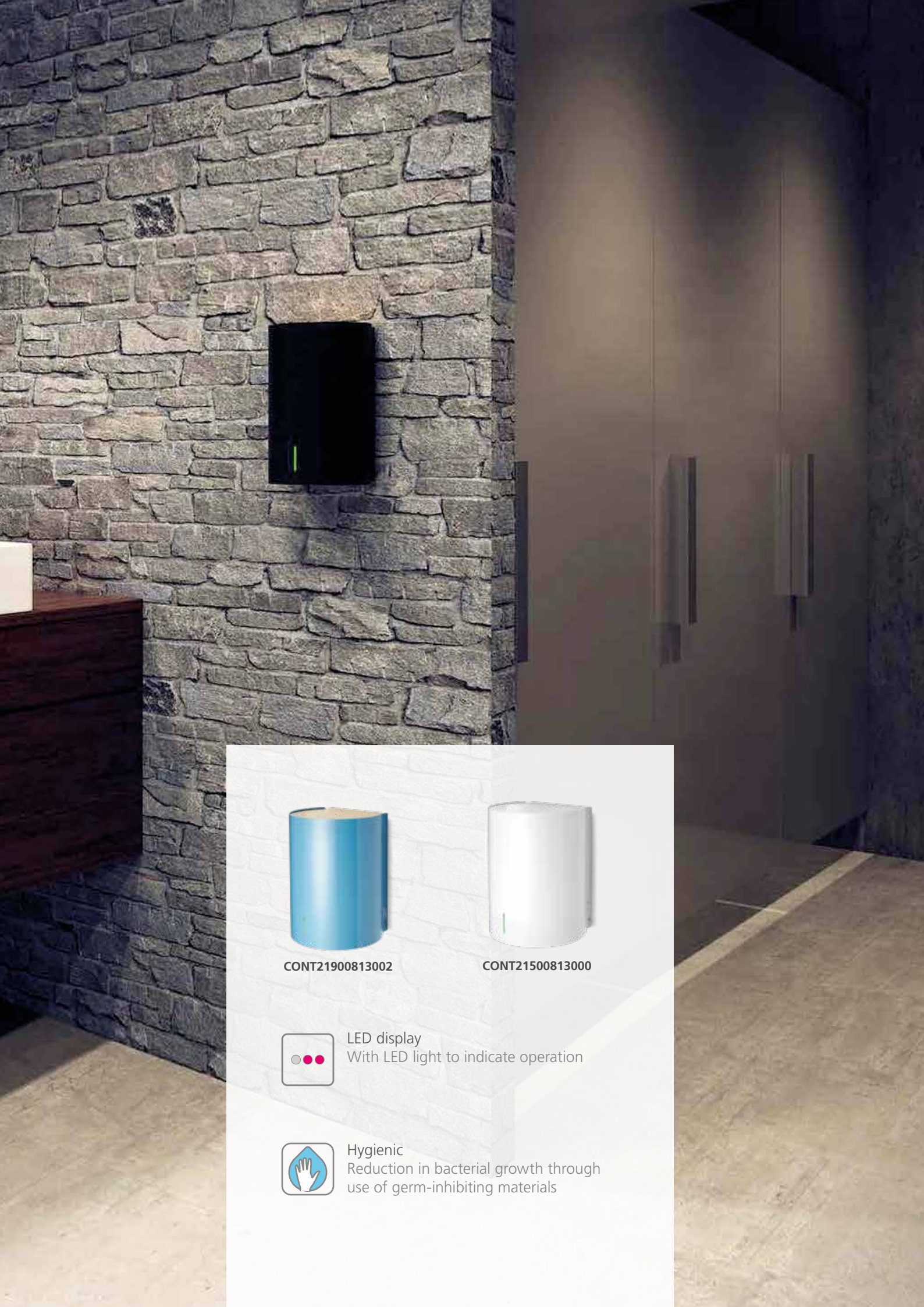


Touch-free
Reliable, touch-free operation

Equipped with an easily interchangeable cover plate which allows the colours and look to complement the surroundings.

Add an individual touch to your washroom with the CONTI+ BJÖRK range in stainless steel, available in matt black, white and RAL colours. A matching cover plate is available in a choice of Negro Ingo | Bianco | Male | Birch | Eastwood Lava | Slate | Natural Concrete.





CONT21900813002



CONT21500813000



LED display
With LED light to indicate operation



Hygienic
Reduction in bacterial growth through
use of germ-inhibiting materials



Touch-free
Reliable, touch-free operation



Hygienic
Reduction in bacterial growth through
use of germ-inhibiting materials



LED display
With LED light to indicate operation

Disinfectant dispensers

CONTI+ BJÖRK contemporary and space saving

Hand disinfectant and soap dispenser in an award-winning design that lends the product a slimline, almost floating look.

Electronic disinfectant and soap dispensers offer the best possible user experience with high safety and hygiene standards. Touch-free operation minimises the risk of germ transmission.



CONT17600813056 Matt black
CONT21500813000 White
CONT21900813002 RAL colours

- For disinfectant
- For wall mounting
- Touch-free
- Stainless steel housing
- With IR sensor
- Capacity: approx. 0.9 l
- Battery operation; optional mains connection
- LED light to indicate operation
- Automatic adjustment of optimum activation distance
- In matt black, white and RAL colours
- Cover plate available in a choice of 6 standard colours



Portable, individual floor stands for the BJÖRK product series. Can be used anywhere.

BJÖRK floor stands with disinfectant dispenser

CONT43600073135 Black
CONT43600073136 White
CONT43600073137 Silver

- Powder coated stainless steel
- Available in black, white and RAL colours





Changing table

CONTI+ BJÖRK: safe and space saving

A flexible solution

When it comes to baby changing rooms in public facilities, the demands in terms of safety and durability are high. A sophisticated design and use of high quality materials ensure the table is both strong and safe. It also takes up minimal space as it can be folded up against the wall after use.



BJÖRK changing table

- For wall mounting
- With painted aluminium profile, steel plate and painted curved edges
- Swivel joint: electro-galvanised steel
- Strong materials with rounded corners for optimum safety
- Ideal where wall space is limited
- Easy opening and closing
- Fixings not included

Colours: Matt black **CONT25678713205**
White **CONT25578713200**
RAL colours **CONT25978713210**



BJÖRK paper dispenser

CONT13600713255 Matt black

- For wall mounting
- Made of powder coated stainless steel
- With safety lock
- Suitable paper towels available
- Also available in white and all RAL colours



For combining with:
CONT13600713255,
CONT13500713250
and CONT13900713260
(BJÖRK paper dispensers)

CONTI+ BJÖRK new products

Contemporary and aesthetically appealing



BJÖRK sanitary bin
CONT18670013305 Matt black

- For wall mounting
- Housing made from powder coated stainless steel
- Capacity: 12 l
- With hinged lid
- Inner, spring-loaded bag holder
- Easy replacement of rubbish bag
- In matt black, white or RAL colours



BJÖRK waste bin
CONT18670013325 Matt black

- For wall mounting
- Housing made from powder coated stainless steel
- Capacity: 18 l
- Lock and universal key
- Door that opens at the side
- Easy replacement of rubbish bag
- In matt black, white or RAL colours



BJÖRK paper towel dispenser
CONT16670013275 Matt black

- For wall mounting
- Housing made from powder coated stainless steel
- Large capacity
- Lock and universal key
- Fitted with laminate cover plate; other colours available
- Centre pull, one-handed operation
- In matt black, white or RAL colours



BJÖRK DESIGN toilet paper holder
CONT13600713355 Matt black

- For 1 jumbo and 1 standard roll
- For wall mounting
- Powder coated stainless steel housing
- In matt black, white or RAL colours



BJÖRK DESIGN toilet paper holder
CONT13600713375 Matt black

- For 2 standard rolls
- For wall mounting
- Powder coated stainless steel housing
- In matt black, white or RAL colours



BJÖRK manual dispenser
CONT17670013275 Liquid/foam soap
CONT17670013145 Disinfectant

- For liquid and foam soap or disinfectant
- For wall mounting, manual operation
- Powder coated stainless steel housing
- Capacity: 1.2 l
- Fitted with laminate cover plate; other colours available
- In matt black, white or RAL colours



BJÖRK freestanding floor stand
CONT43600073181 Matt black

- Portable floor stand for attaching touch-free disinfectant dispensers.
- Made from steel and aluminium
- Model with integral drip tray
- Additionally available in all RAL colours



BJÖRK freestanding tabletop stand
CONT43600083176 Matt black

- Portable tabletop stand for attaching disinfectant dispensers; can be positioned where needed
- Made from steel and aluminium
- Model with integral drip tray
- Additionally available in all RAL colours



CONTI+ oXan™ clean bag-in-box
CONB922005010

- Disinfectant
- Ready-to-use solution for refilling
- Spectrum of activity: bactericidal, fungicidal, sporicidal, virucidal, algicidal





CONTI+ TAP design series

Minimalist and intelligent

Soap and disinfectant dispensers and hand dryers mounted directly at the washbasin.



Touch-free
Reliable, touch-free operation

SoapTap soap and disinfectant dispensers

The soap dispenser from the TAP designer series can be installed on the washbasin or wall, is suitable for liquid and foam soap and features a satin-finish stainless steel housing. Functional and hygienic operation is ensured by the integral IR sensor and electronic time switch. The activation distance is adjustable between 20 and 150 mm.



Soap dispenser for washbasin mounting
CONT17206830376 Liquid soap
CONT17206830376 Disinfectant
CONT17206830380 Foam soap



Soap dispenser for wall mounting
CONT17206840378 Liquid soap
CONT17206840378 Disinfectant
CONT17206840382 Foam soap

AirTap hand dryer

The AirTap intelligent hand dryer for installation on the washbasin or wall mounted and mirrors offers the functional safety you need in your washroom. The stainless steel housing with satin finish proclaims its aesthetic appeal and design credentials. The product features intelligent temperature control, automatic adaptation and an activation distance that is adjustable between 20 and 130 mm. The powerful commutator motor with carbon brushes is mounted either under the washbasin or on the wall.



Hand dryer for washbasin mounting
CONT21206830370



Hand dryer for wall mounting
CONT21206840372



Stainless steel equipment

Superior quality, robust and timeless

CONTI+ equipment series

Designed for use in public and commercial environments, the stainless steel series is a shining example of tough, robust and vandal-proof design combined with timeless elegance. Superbly finished and attractively designed, the CONTI+ range of equipment is available in satin stainless steel. The use of 1.4301 stainless steel makes it difficult for bacteria to survive. Unlike other materials, stainless steel remains permanently smooth. It is resistant to scratches, abrasion and chemicals and offers little possibility for vandalism thanks to its robust design.



CONT19200041060
Flush mounted combined
paper towel dispenser and
waste bin in stainless steel



Robust housing
Stainless steel / chrome plated stainless steel –
hygienic, robust and vandal-proof



Can be combined
Products from this equipment series can be combined
with each other



Hygienic
Reduction in bacterial growth through use of
germ-inhibiting materials

CONTI+ soap dispensers

Models for every washbasin

From washbasins and innovative washbasin faucets through to robust washroom equipment and accessories such as soap and disinfectant dispensers – all can be optimally integrated into the washroom environment. Whether installing on the washbasin or wall, CONTI+ offers you a complete solution entirely tailored to your washroom requirements.



Wall soap dispenser

CONT17300710150 Chrome plated

CONT17200710150 Matt stainless steel

- With 2 drilling holes
- Exclusively for pH neutral, chloride-free and halogen-free soap
- Capacity: 150 ml



Washbasin soap dispenser

CONT17300730062

- Solid brass, chrome plated
- With manually operated theft-proof dosing pump
- Liquid soap can be refilled from the top without having to remove the refill container
- Refill container for liquid soap, made from plastic
- Capacity: 500 ml



Washbasin soap dispenser, short

CONT17300731090 Chrome plated

CONT17200731090 Matt stainless steel

- With 1000 ml reservoir
- Refillable from the top and bottom
- Pumping height: approx. 1500 mm
- Dosage: 1 – 2 ml per press
- For panel thickness of up to 50 mm



Washbasin soap dispenser, long

CONT17300731149 Chrome plated

CONT17200731149 Matt stainless steel

- With 1000 ml reservoir
- Refillable from the top and bottom
- Pumping height: approx. 1500 mm
- Dosage: 2 ml per press
- For panel thickness of up to 50 mm



CONTI+ dispenser

Manually operated and practical



Manual soap dispenser

CONT17500710833 White

CONT17200710834 Stainless steel

- For wall mounting
- For liquid or foam soap
- Removable refill container
- Housing: powder coated stainless steel, white
- With fill level indicator
- Doses: 500 to 600/1000 to 1200

• 600 ml capacity **CONT17500710833**

• 1200 ml capacity **CONT17500710830**



Manual disinfectant dispenser

CONT17700710268

- Can also be filled with liquid soap
- For wall mounting
- Aluminium housing
- Stainless steel pump handle
- Capacity: 1000 ml
- Dosage: 1 – 3 ml per actuation

Individual dispenser systems

Electronic, touch-free operation

Electronic faucets already offer the best possible user experience with high safety and hygiene standards. By adding touch-free operation for the soap and disinfectant dispensers, the risk of germ transmission is significantly reduced here too. Hygienic operation throughout the washroom.



Touch-free
Reliable, touch-free operation



Hygienic
Reduction in bacterial growth through use of germ-inhibiting materials

ELEGANCE
Soap / disinfectant dispenser
CONT17500810717 / CONT17500810718

- For wall mounting
- Touch-free, battery operation
- Housing made of impact-resistant plastic
- With fill level indicator
- Locked with a special key
- Capacity: 1100 ml
- Activation distance: 1 to 8 cm



CLEANLINE
Liquid soap / foam soap
CONT17200810846 / CONT17200810847

- For wall mounting
- Touch-free, battery operation
- Housing made from stainless steel and plastic
- Up to 1300 doses
- Capacity: 800 ml
- Mains connection possible by means of external transformer
- Lock safeguards against vandalism



HK IRSP disinfectant dispenser
CONT17500810031

- For wall mounting
- Touch-free, battery operation
- Made from stainless steel
- Touch-free activation via IR sensor
- Capacity: 800 ml
- With 800 ml refill container
- Lock safeguards against vandalism



Wall soap dispenser
CONT17200710305

- For wall mounting
- Fixings not included
- Theft-proof fixing, lockable from above
- Capacity: 1000 ml
- Recommended for pH neutral, chloride-free and halogen-free soap



CONTI+ SteelTec hand dryers

From MINI to TURBO to MAXI



MINI hand dryer
CONT21500810270

- For wall mounting
- Touch-free thanks to IR sensor
- Housing: 2 mm die-cast aluminium
- Drying time: approx. 30 s
- Electronic time switch
- Stops 2 seconds after hands removed or after 60 seconds of continuous operation
- Induction motor without carbon brushes



MAXI hand dryer
CONT21500810272

- For wall mounting
- Touch-free thanks to IR sensor
- Housing: 2 mm steel plate
- Drying time: 20 – 25 s
- Electronic time switch
- Powerful commutator motor
- Maintenance friendly
- With chrome plated outlet nozzle made of zinc



AE hand dryer
CONT21500810261

- For wall mounting
- Touch-free thanks to IR sensor
- Housing: 4 mm die-cast aluminium
- Drying time: 25 – 170 s
- Electronic time switch
- Virtually maintenance-free
- With induction motor
- 90% recyclable



Hand dryer / hair dryer
CONT26500710100

- For wall mounting
- With pushbutton activation
- Housing: 4 mm die-cast aluminium
- Drying time: 25 – 170 s
- With induction motor



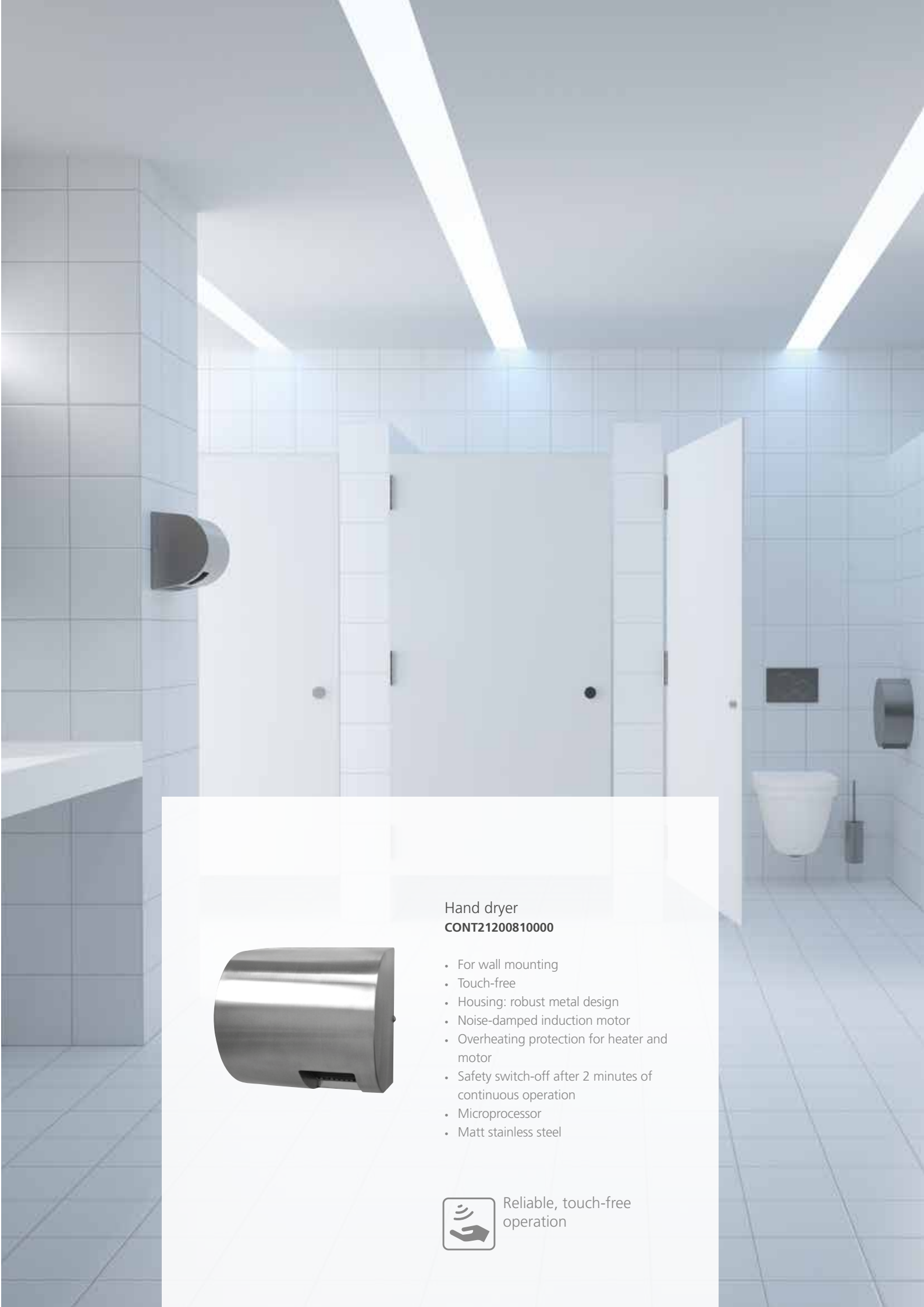
TURBO hand dryer
CONT21500810246 White
CONT21200810247 Matt stainless steel

- For wall mounting
- Touch-free thanks to IR sensor
- Housing: steel
- Drying time: 10 – 15 s
- Maintenance friendly



TURBO hand dryer, rear panel mounted
CONT21200850244

- For installation behind cupboards or mirrors
- Touch-free thanks to IR sensor
- Housing: brushed stainless steel
- Drying time: approx. 10 – 15 s
- Electronic time switch
- Powerful commutator motor



Hand dryer
CONT21200810000

- For wall mounting
- Touch-free
- Housing: robust metal design
- Noise-damped induction motor
- Overheating protection for heater and motor
- Safety switch-off after 2 minutes of continuous operation
- Microprocessor
- Matt stainless steel



Reliable, touch-free
operation



CONTI+ hair dryers

Powerful and reliable

Whether for use at swimming pools, gyms or spas, the low-noise hair dryers with IR sensor provide effective, fast drying. Available painted in white or in satin stainless steel, these models are ideally suited for use in public and semi-public areas.



ELEGANCE hair dryer, manual
CONT26500710713

- For wall mounting
- Robust hair dryer with strong warm air hose
- Double insulated
- Manual adjustment of air volume with choice of two levels: 1200 W (max.)
- Housing made of white impact-resistant plastic



Hair dryer
CONT26500710100

- For wall mounting
- With pushbutton activation
- Drying time: 25 – 170 s
- With electric time switch
- Virtually maintenance-free
- With induction motor
- Housing made of 4 mm die-cast aluminium
- Additionally available in all RAL colours



Height adjustment rail
CONT26000710645

- For wall mounting
- For electronic warm air dryer/hair dryer
- Infinite adjustment range of 500 mm
- Robust rail with strong gas springs
- For combining with hand/hair dryer (CONT26500710100)

CONTI+ stainless steel equipment range

From paper towel dispensers through to waste bins and a changing table



Wastepaper bin, floor standing
CONT18200060640

- With 4 rubber pads as feet
- Floor standing
- Matt stainless steel



Paper waste bin, wall mounted
CONT18200010602

- For wall mounting
- With 3 drilling holes
- Lockable from the top
- Matt stainless steel



Paper waste bin, inset mounted
CONT18200040644

- For wall installation
- With mounting frame
- Matt stainless steel
- Matt stainless steel
- Lockable from the front



Sanitary bag dispenser
CONT16200040130

- For wall mounting
- With 2 drilling holes
- 1 pack containing 30 bags
- Matt stainless steel



Sanitary bin
CONT18200010305

- For wall mounting, with 3 drilling holes
- With hinged lid
- With integrated compartment for sanitary bags
- Matt stainless steel



Sanitary bin
CONT18200011305 right
CONT18200012305 left

- For wall mounting, with 3 drilling holes.
- Side hole opening right/left
- Lockable from the front
- With compartment for 1 pack containing 30 bags
- Matt stainless steel



Paper towel dispenser, wall mounted
CONT16200010000

- For wall mounting, with 3 drilling holes
- Fixings not included
- Lockable from above
- Matt stainless steel



Paper towel dispenser, mirror mounted
CONT16200050000

- For installation behind a mirror
- Paper issue below
- Filling from top
- Capacity 400 mm
- Matt stainless steel



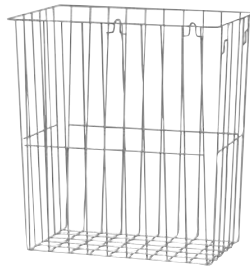
Paper towel dispenser, washbasin
CONT16200030000

- For installation in washbasin (vertical/horizontal)
- Paper issued from the front or above
- Capacity: approx. 800 folded towels
- Matt stainless steel



Sanitary/waste bin
CONT16200040461

- For wall installation
- Flush mounted combination
- Consists of a sanitary bag dispenser and waste bin, mounting frame, cover and lock mechanism
- Lockable from the front
- Matt stainless steel



Mesh basket
CONT18500000640

- For use with or without waste bags
- Wire mesh with wall bracket
- Wall mounted or freestanding
- Stainless steel mesh, plastic coated
- Available in white and silver



Changing table
CONT25578710000

- Fixings included
- For surface mounting on wall
- Can be folded down from the wall
- Base can be disinfected
- Substructure made of steel
- Supports up to 60 kg
- With dispensing compartment for liners
- In beige plastic

CONTI+ oXan™ clean

Disinfection solutions for all applications

Hand washing has always been an important topic and in times of numerous viruses, germs and bacteria, it is more important today than ever.

Surface & hand hygiene

Application area: For sterilising surfaces, tools, installation components and appliances for installation in drinking water systems, as well as for hand hygiene.

Tools, components, appliances:
Spray or immerse; do not wipe afterwards.

Work and storage surfaces:
Spray and if necessary wipe with a sterile cloth.

Hands: Apply to hands and rub in.

Ready-to-use solution or concentrate:
Free of alcohol, aldehydes, dyes, fragrances, bleaches and solvents.
Spectrum of activity: bactericidal, fungicidal, sporicidal, virucidal, algicidal.

CONTI+ oXan™ clean is suitable for all CONTI+ disinfectant dispensers.



CONTI+ touch-free soap dispenser, for liquid soap or disinfectant
CONT17500817501

- For wall mounting
- Touch-free, battery operation
- Touch-free activation via IR sensor
- With 500 ml refill container
- Dosage: 1 ml per dose
- Inspection window at front for checking fill level
- Housing made of ABS, white at front, grey at back

Other CONTI+ oXan™ solutions:

CONB91200020 CONTI+ oXan™ zero for drinking water disinfection
CONB93200010 CONTI+ oXan™ fresh for disinfecting rooms and air conditioning systems*
CONB94200020 CONTI+ oXan™ prime for sanitising swimming pool filters

*(10 l bag-in-box)

CONTI+ oXan™ clean

Hand hygiene & surface disinfection

Our comprehensive CONTI+ hygiene concept helps you to protect your drinking water every step of the way, from planning right through to construction, commissioning, ongoing operation and maintenance. Even in acute cases, our hygiene concept offers measures for eliminating contamination together with service packages, concepts and solutions to prevent such occurrences in the future.

For disinfecting surfaces, tools, installation components, and appliance and storage surfaces and for hand hygiene. For use when setting up and performing maintenance on drinking water installations. Residue-free elimination of microbiological contamination.



CONTI+ oXan™ clean disinfectant
100 ml **CONB92100100**
500 ml **CONB92100500**

- pH neutral ready-to-use solution
- No build-up of resistance
- No requirement to mark as hazardous substance
- No cytotoxicity (cell and tissue damage)
- No phytotoxicity (plant damage)
- No solvents, alcohol, aldehydes or fragrances



CONTI+ oXan™ clean bag-in-box, 10 l
CONB92205010

- pH neutral ready-to-use solution
- No build-up of resistance
- No requirement to mark as hazardous substance
- No cytotoxicity (cell and tissue damage)
- No phytotoxicity (plant damage)
- No solvents, alcohol, aldehydes or fragrances

Note:
Use biocides safely. Always read the label and product information before use.





CONTI+ accessories

Stylish and versatile

Aesthetics in both semi-public and private institutions form a crucial component. The demand for a successful blend of form and function is high, and creates a challenge for operators and owners alike. Selection of the right product has a significant impact on the effect of a sanitary facility and is therefore an architectural design element in itself. Standard versions and custom-made ergonomic forms adapted to the room enhance the level of comfort in the washroom.



Shelf
CONT23300010410

- With towel rail
- Length: 400 mm
- For wall mounting
- Chrome plated



Shelf
CONT23300010400

- Length: 400 mm
- For wall mounting
- Chrome plated



Towel rail
CONT15360010300 Chrome plated
CONT15260010300 Matt stainless steel

- Length: 300 mm
- For wall mounting
- Theft-proof fixing



Towel rail
CONT15360010600 Chrome plated
CONT15260010600 Matt stainless steel

- Length: 600 mm
- For wall mounting
- Theft-proof fixing



Towel rail
CONT15370010450 Chrome plated
CONT15270010450 Matt stainless steel

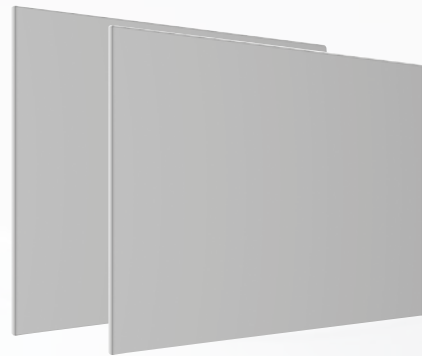
- Length: 450 mm
- For wall mounting
- Two-arm pivoting design
- Theft-proof fixing



Wall mirror

CONT22100010487

- Mirror surface features 8 mm bevelled edge all round
- With plastic backing plate
- Backing plate provided with 4 drilling holes
- for mounting on the wall and double-sided adhesive tape for attaching the mirror
- Fixings included
- Dimensions: 500 x 400 mm



Wall mirror

CONT22100010545 / CONT22100011545

- Mirror surface features 8 mm bevelled edge all round
- With plastic backing plate
- Backing plate provided with 4 drilling holes
- for mounting on the wall and double-sided adhesive tape for attaching the mirror
- Fixings included
- Dimensions: 600x400/600x500 mm

CONTI+ WC equipment

Hygienic and timeless

When WC equipment needs to be more than just conventional, the robust and timeless products from the CONTI+ range provide the solution. Made from chrome or high quality satin stainless steel and featuring a linear design, the accessories complement the stylish and harmoniously coordinated overall washroom and WC furnishing concept.



Toilet paper holder
CONT13200010300

- For wall mounting
- Free fillable with 1 large roll
- Roll stop function
- Fill level indicator
- Lockable
- Satin stainless steel



Toilet brush set
CONT12200010000 Stainless steel
CONT12200010000 Chrome plated

- For wall mounting
- With brush holder and exchangeable brush, black
- Removable plastic insert
- Theft-proof fixing
- Replacement brushes available separately



CONTI+ WC accessories

From toilet paper holders to waste chute rings



Toilet paper holder
CONT13306010000 Chrome plated
CONT13206010000 Matt stainless steel

- Length: 160 mm
- For wall mounting
- Theft-proof fixing



Spare toilet paper holder
CONT13308010000 Chrome plated
CONT13208010000 Matt stainless steel

- Height: 160 mm
- For wall mounting
- Theft-proof fixing



Hook
CONT14300010000 Chrome plated
CONT14200010000 Matt stainless steel

- Length: 80 mm
- For wall mounting, with pin
- Theft-proof fixing



Hook with doorstop
CONT14300010100 Chrome plated
CONT14200010100 Matt stainless steel

- Length: 70 mm
- For wall mounting, with pin



Waste chute ring
CONT24207030150

- Round
- For installation into washbasin counter
- Satin stainless steel



Waste chute ring
CONT24208030130

- Square
- For installation into washbasin counter
- Satin stainless steel





CONTI+ SteelTec urinals

Hygienic and robust

Washrooms for public use need to be hygienic, vandal-proof and easy to clean.



Robust housing

Stainless steel/chrome plated stainless steel, hygienic, robust and vandal-proof



Hygienic

Reduction in bacterial growth through use of germ-inhibiting materials

In regularly frequented public showers and washrooms or in demanding commercial facilities, the requirements for sanitary equipment are particularly high when it comes to robustness, durability, simple operation and safe functioning. We also consider it hugely important to reduce water and energy bills and keep maintenance and operating costs to a minimum.



SteelTec Oslo urinal

CONT08200010500 Wall mounted

CONT08200020500 Rear panel mounted

- For wall and rear panel mounting
- Vandal-proof design
- With 1 1/4" odour trap
- With mesh drain and spray nozzle
- With flexible water connection
- Matt stainless steel, bright stainless steel on the inside



SteelTec partition

CONT09200010383

- For wall mounting
- With concealed wall bracket
- Accessory for the SteelTec Oslo urinal
- Dimensions (W x H x D): 80 x 1092 x 383 mm
- Matt stainless steel



Touch-free
Reliable, touch-free operation



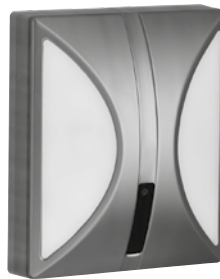
Hygienic
Reduction in bacterial growth through
use of germ-inhibiting materials

CONTI+ urinal flush valves

Touch-free and hygienic

IR sensor technology

CONTI+ urinal flush valves with sensor technology are the perfect solution for hygienic WC facilities. Whether you opt for the surface mounted, aesthetically appealing version with glass front panels, or the more robust design with stainless steel cover plate, CONTI+ urinal flush valves always cut a fine figure.



CONTI+ lino urinal flush valve U10
220.000.43 Fully fitted kit

- Touch-free, battery operation
- Electronically controlled
- For flush mounting
- Robust valve; front panel made of metal
- With infrared sensor, microprocessor electronics
- ROBUST fail-safe cartridge solenoid valve (low water hammer)
- Dynamic sensor: continually adjusts the optimum range



CONTI+ ultra urinal flush valve U18
260.000.31 White
260.000.71 Black

- Touch-free, battery operation
- For flush mounting
- Front panel made from toughened glass, white
- Support frame: chrome plated brass
- With dual infrared sensors, microprocessor electronics



CONTI+ iQ urinal flush valve U28
201.000.01

- Touch-free, battery operation
- For flush mounting without wiring
- Sturdy front panel made from brushed stainless steel
- Support frame: chrome plated brass
- With dual infrared sensors, microprocessor electronics
- Dynamic sensor: continually adjusts the optimum range
- CNX-compatible

CONTI+ conversion kits

Customised and solution oriented

If you need a special solution, we'll be happy to develop custom designs specifically tailored to your customer or building requirements. Whether it's a matter of non-standard dimensions, additional versions of equipment or refurbishment and conversion solutions, CONTI+ is able to satisfy both your design and installation needs.

lino urinal flush valve U55 Conversion kit for flush mounted flush valve **220.200.43**



- Robust valve; front panel made of metal
- Infrared sensor (fully automatic adjustment), microprocessor electronics
- Dynamic sensor for the optimum range
- Cleaning and flushing can be activated with a click
- Flush time and sensor sensitivity can be adjusted with a click
- 24-hour forced flushing and pre-flush can be activated with a click
- In matt chrome/white

Conversion kit for flush mounted urinal flush valves

CONS13951410190	175 x 190 x 1.5 mm
CONS13951410225	205 x 225 x 1.5 mm
CONS13951420190	175 x 190 x 12 mm
CONS13951420225	205 x 225 x 12 mm



- Touch-free thanks to IR sensor
- Universal cover plate for continued use of existing flush mounted body
- Cover plate: 1.4404 stainless steel
- Surface: satin
- Cover plate installed with countersunk screws
- Customer positioning of drilling holes
- Stainless steel



lino exposed urinal flush valve U60

220.100.11 With battery
220.108.11 With solar



- Touch-free
- Robust brass housing, polished
- Digital microelectronics with processor (waterproof sealed)
- Dynamic IR sensor: continually adjusts the optimum range
- ROBUST fail-safe solenoid valve (low water hammer)
- Temporary-off (cleaning) and short-on (flush) can be activated with a click
- Flush time and sensor sensitivity can be adjusted with a click
- 24-hour forced flushing and pre-flush can be activated with a click
- Stop valve with dirt filter and collar
- Flush pipe and cover collar (185 mm) with urinal connector





CONTI+ Kiel washbasins

Aesthetically appealing and robust

An attractive, aesthetically appealing and robust solution for semi-public and commercial washrooms. The hygienic CONTI+ SteelTec Kiel washbasins featuring a curved design for installation in the countertop are bound to impress. They are hygienic and available in robust matt or bright stainless steel.

SteelTec Kiel 300 washbasin

CONT01122230334 Bright stainless steel

CONT01222230334 Matt stainless steel



- For installation in or under the countertop
- Permanent open waste
- Without overflow
- Drain valve
- Drain cover

SteelTec Kiel 430 washbasin

CONT01122230400 Bright stainless steel

CONT01222230400 Matt stainless steel



- For installation in the countertop
- With central faucet hole in shelf area
- Hygienic edge
- Without overflow
- Drain valve
- Drain cover



Robust housing

Stainless steel / chrome plated stainless steel –
hygienic, robust and vandal-proof



CONTI+ SteelTec washbasins

Stainless steel for wall mounting



SteelTec Emden washbasin
CONT01212200420

- For wall mounting
- With integral soap trays
- With overflow assembly
- With 1 1/2" drain valve
- With plug and chain
- Including brackets and installation material
- With faucet hole



SteelTec Bergen 480 washbasin
CONT01221210480

- For wall mounting
- With washboard stamping at the front
- With integral hygienic edge
- With overflow assembly
- With 1 1/2" drain valve
- With plug and chain
- With brackets and fixings
- Without faucet hole



SteelTec Bergen 530 washbasin
CONT01221210530

- For wall mounting
- With washboard stamping at the front
- With integral hygienic edge
- With overflow assembly
- With 1 1/2" drain valve
- With plug and chain
- With brackets and fixings
- Without faucet hole



SteelTec Visby 450 utility sink
CONT05211210450

- For wall mounting
- With wall panel and space saving odour trap
- With brackets and installation bolts
- With 3 1/2" x 2" drain valve
- Without overflow
- Without grille
- Without faucet hole



SteelTec Visby 330 utility sink
CONT05211210330

- For wall mounting
- With wall panel and space saving odour trap
- With brackets and 1 1/2" drain valve
- Without grille
- Without overflow
- Without faucet hole



SteelTec Visby 390 laboratory sink
CONT05221210390

- For wall mounting
- With rear panel
- With overflow assembly
- With brackets and installation bolts
- With 3 1/2" x 1 1/2" drain valve
- With plug and chain

CONTI+ SteelTec

From washbasins and wash troughs to WC variations



SteelTec Riga 340 washbasin
CONT01211210338 Wall mounted
CONT01211220338 Rear panel mounted

- For wall and rear panel mounting
- With integral 1 1/4" drain valve
- With odour trap
- With wall bracket and installation material
- Vandal-proof design
- Without faucet hole
- Without overflow
- Polished bowl, matt outside



SteelTec Riga 400 washbasin
CONT01211210400 Wall mounted
CONT01211220400 Rear panel mounted

- For wall and rear panel mounting
- With integral 1 1/4" drain valve
- With odour trap
- With wall bracket and installation material
- Vandal-proof design
- Without faucet hole
- Without overflow
- Polished bowl, matt outside



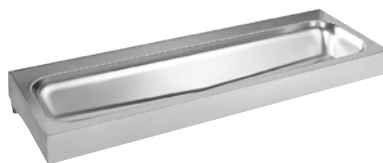
SteelTec Riga 400T drinking fountain
CONT04210210338

- For wall mounting
- With integral 1 1/4" drain valve
- With odour trap
- Including drinking fountain faucet
- Including brackets and installation material
- Vandal-proof design
- Without overflow
- Matt stainless steel/bright stainless steel



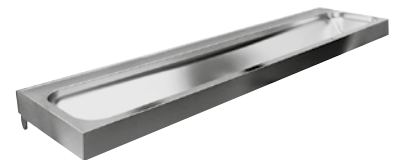
SteelTec Fjell 230 washbasin
CONT01212110230

- The small washbasin
- For wall mounting
- With 1 1/4" drain
- Including brackets and installation material
- With faucet hole, can be installed on right or left
- Matt stainless steel



SteelTec Fjord 1200 wash trough
CONT07211211201

- For wall mounting
- Including 1 1/2" drain valve and pre-installation for optional wall panel
- With brackets and fixings
- Seamlessly pressed
- Without faucet hole
- Without overflow
- Matt stainless steel



SteelTec Fjord 1800 wash trough
CONT07211211801

- For wall mounting
- Including 1 1/2" drain valve and pre-installation for optional wall panel
- With brackets and fixings
- Seamlessly pressed
- Without faucet hole
- Without overflow
- Matt stainless steel



SteelTec Lund 305 built-in basin
CONT02121130305

- Installation in the countertop, glued into place
- With overflow and overflow assembly
- In high gloss and matt finish
- Stainless steel interior and exterior
- Matt stainless steel



SteelTec Malmoe washbasin
CONT01211210415

- For wall mounting
- With integral brackets
- With installation bolts
- With 1 1/4" drain valve
- Without faucet hole
- With overflow



SteelTec Koge wash trough
CONT07211211200

- Recess mounted with hygienic edge
- Seamlessly pressed
- With brackets and fixings
- Includes 1 1/2" drain valve
- With two faucet holes
- Without overflow
- Matt stainless steel



SteelTec Malm squat WC
CONT08210200700

- Profiled foot surface
- With overflow
- Connection from behind
- For common DN20 toilet wall mounted flush valves and cisterns
- Flush volume: up to 9 l
- With DN100 outlet
- Matt stainless steel
- Including brackets and installation material



SteelTec Malm wall mounted WC
CONT08230011000

- Choice of seat colours
- Connection from behind
- For common toilet wall mounted flush valves and cisterns
- Flush volume: up to 9 l
- With DN100 outlet
- Including brackets and installation material



Grille for Visby utility sink
CONO710330 Visby 330
CONO710450 Visby 400

- For retrofitting corner protection
- For SteelTec Fjord wash trough
- ABS plastic

Further accessories available

Reliable & innovative

For over 45 years, the CONTI+ brand has been recognised for flexible and holistic shower room and washroom solutions for public, semi-public and commercial environments as well as the health sector.

Known for its innovative technology and high grade materials, the brand has gained a reputation for unfailing quality. With a wide-ranging product portfolio and many years of experience creating custom designs, CONTI+ is now widely recognised among design engineers and architects for its valuable contribution to their projects. Every last detail is contemplated when developing tailor-made products, resulting in smart, individual solutions to suit a plethora of applications and equipment. The choice of shower and washbasin fittings encompasses a variety of colours and finishes as well as options for surface or flush mounting. Naturally sustainability, hygiene and reliability are prime considerations in the development of all products.

Thanks to its dependable quality and innovative technology, CONTI+ has remained a trusted brand throughout the world for over 45 years.

CONTI Sanitärarmaturen GmbH
 Hauptstraße 98
 35435 Wettenberg | Germany
 Tel. +49 641 98221 0
 Fax +49 641 98221 50
 info@conti.plus
 www.conti.plus

Member of Fortuna Group 



Certificates are product related and not valid in general